



All superscript numbers (Example: Description<sup>1</sup>) correspond to important notes at the bottom of each page.

**Please refer to separate Orthopedic Surgery Reference Guide for Medi-Cal payors where applicable.**

*This guide has three sections:*

**Page 1: Referrals for: Diagnosis Specific Visits and Non-Fracture/Dislocation Visits**

**Page 2: All Fracture/Dislocation Referrals**

### Referrals for: Diagnosis Specific Visits

Condition/Diagnosis:	Required Codes:
Congenital Talipes Equinovarus (Club Foot)	Visit Codes 99202-99205 29355x2, 27605x2, 29450x6, Q4031x2, Q4032x2, Q4040x2, Q4039x2 77071, 77072, 77073, 73551-73660
(Toe Walker)	Visit Codes 99202-99205 29450x6, Q4031x2, Q4032x2, Q4040x2, Q4039x2 77071, 77072, 77073, 73551-73660
Genu Valgum (Knocked Knee)	Visit Codes 99202-99205 77071, 77072, 77073, 73551-73660
Syndactyly- (Upper Extremity) Webbed Fingers	Visit Codes 99202-99205 77071, 77072, 73000-73140
Syndactyly- (Lower Extremity) Webbed Toes	Visit Codes 99202-99205 77071, 77072, 73551-73660
Metatarsus Adductus (Toes Pointed Inward)	Visit Codes 99202-99205 29355x2, 29450x6, Q4032x2 77071, 77072, 77073, 73551-73660
Vertical Talus (Rocker Bottom Flat Foot)	Visit Codes 99202-99205 29355x2, 29450x6, Q4032x2 77071, 77072, 77073, 73551-73660
Plantar Fasciitis/ Flat Foot/ Foot Deformity	Visit Codes 99202-99205 29355x2, 29450x6, Q4032x2 77071, 77072, 77073, (73551-73660)x3

### Referrals for: Non-Fracture/Dislocation Visits

Select codes from each section:

**A** Visit Codes

**B** Required X-Ray/Radiology codes

#### Visit Code(s):

**New Patient/Initial Visit Code(s):**

99202-99205

**Established Patient/Follow Up Code(s):**

99211-99215

#### Required Radiology Codes

**Bone/Body Region(s):**

**Radiology Code(s) \*ranges are all-inclusive:**

Scapula & Clavicle	*73000-73050
Spine (Back & Neck)	*72082 -72120, *72200-72220, *72040-72052
Pelvic Girdle (Hip/Pelvis)	72170, 72190, *72200-72220, *73501 -73525
Upper Extremities	*73000-73140 (range x3) <sup>1</sup> , 77071, 77072
Lower Extremities	*73551 -73660, 77071, 77072, 77073
Leg Length Discrepancy	*72170, 72190, *73501 -73660, 77072, 77073, 72200-72220

#### Important Notes:

- Patients coming from another facility need to hand carry any previous X-Rays and have Radiology codes authorized for time of service.
  - **Always range** new patients for visit **and** radiology codes.
1. All New Patients with Upper Extremity Fractures Only - Upper Extremity X-rays, request entire range x3 to meet current standard of practice.



All superscript numbers (Example: Description<sup>1</sup>) correspond to important notes at the bottom of each page.

### Referrals for: Fracture/Dislocation Visits

Selected codes from each section:

- 1** Visit Codes
- 2** Procedure, Casting & Splinting Codes
- 3** Required X-Ray/Radiology codes

#### Visit Codes

**New Patient/Initial Visit Code(s):**

99202-99205

**Established Patient/Follow Up Code(s):**

99211-99215

#### Procedure, Casting & Splinting Codes- to be used only with fracture diagnoses

Bone(s)	Procedures	Pediatric (0-10 years)				Adult (11 years +)			
		Casting Supplies		Splinting		Casting Supplies		Splinting	
		Plaster	Fiberglass	Plaster	Fiberglass	Plaster	Fiberglass	Plaster	Fiberglass
Scapula	23570								
Clavicle	23500								
Phalanges	26720, 26725, <b>29086, 29130</b>	<b>Q4015</b>	<b>Q4016</b>			<b>Q4013</b>	<b>Q4014</b>		
Metacarpals	<b>29075, 29125</b> , 26600, 26605	<b>Q4011</b>	<b>Q4012</b>			<b>Q4009</b>	<b>Q4010</b>		
Carpals	25600, 25630, 25605, <b>29075, 29125, 29065, 29105</b>								
Radius Radius/Ulna	25500, 25560, 25605, 25660, <b>29065, 29075, 29105, 29125</b>								
Ulna	25530, 25535, 25600, 29065, 29075, 29105, 29125	<b>Q4007,</b> <b>Q4011</b>	<b>Q4008,</b> <b>Q4012</b>	<b>Q4019,</b> <b>Q4023</b>	<b>Q4020,</b> <b>Q4024</b>	<b>Q4005,</b> <b>Q4009</b>	<b>Q4006,</b> <b>Q4010</b>	<b>Q4017,</b> <b>Q4021</b>	<b>Q4018,</b> <b>Q4022</b>
Humerus	24500, 24505, 24530, <b>29058, 29065, 29075, 29105</b>								
Elbow	24530, 24670, <b>29065, 29105</b>								
Metatarsals & Phalanges	29425, 28470, L3260, L3265	<b>Q4039</b>	<b>Q4040</b>			<b>Q4037</b>	<b>Q4038</b>		
Femur (Adult)	<b>29345, 29355, 29405</b>					<b>Q4037</b>	<b>Q4038</b>		
Femur (Peds)	<b>27238, 27240</b>	<b>Q4039</b>	<b>Q4040</b>						
Patella	27530, <b>29345, 29355, 29405</b>								
Tibia	27750, <b>29345, 29355, 29405</b>	<b>Q4031,</b> <b>Q4039</b>	<b>Q4032,</b> <b>Q4040</b>			<b>Q4029,</b> <b>Q4037</b>	<b>Q4030,</b> <b>Q4038</b>		
Fibula	27780, <b>29345, 29355, 29405</b> , 29425								
Tarsals	29405, 29425, 27760,	<b>Q4039</b>	<b>Q4040</b>			<b>Q4037</b>	<b>Q4038</b>		
Ankle (post-op only)	<b>29425, 29355, 29345, 29405</b>	<b>Q4039, Q4031</b>	<b>Q4040, Q4032</b>			<b>Q4037, Q4029</b>	<b>Q4038, Q4030</b>		

#### Required Radiology Codes

**Bone/Body Region(s):**

**Radiology Code(s) \*ranges are all-inclusive:**

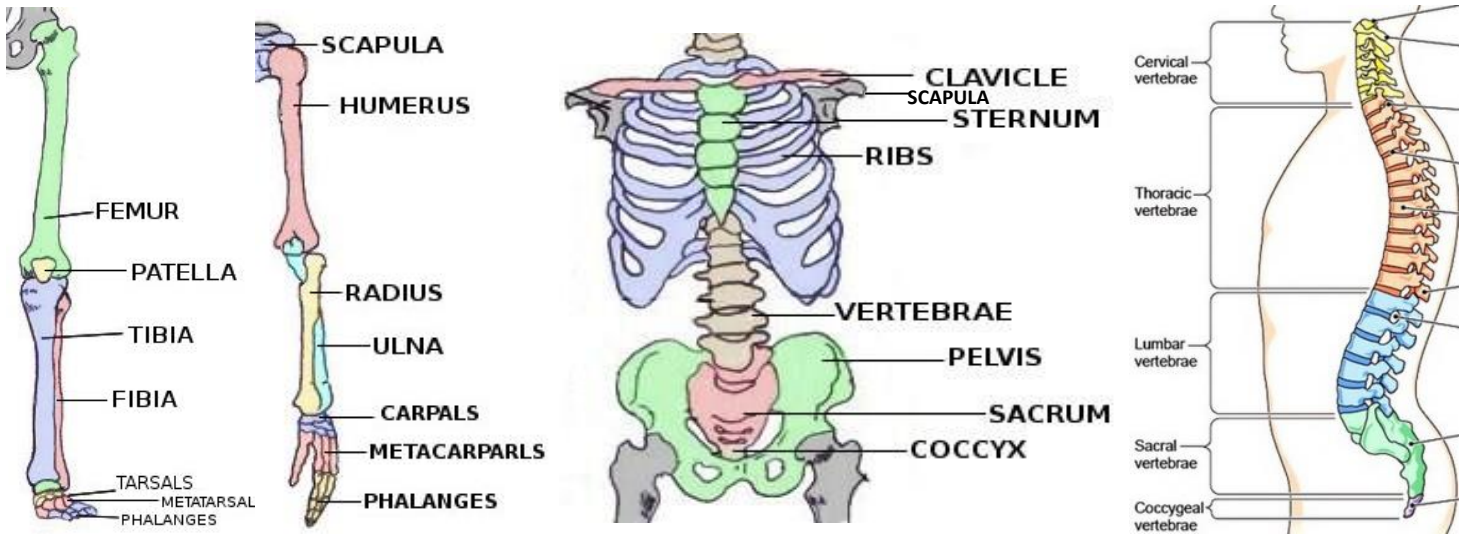
- Scapula & Clavicle **\*73000-73050**
- Spine (Back & Neck) **\*72082- 72120, \*72200-72220, \*72040-72052**
- Pelvic Girdle (Hip/Pelvis) **72170, 72190, \*72200-72220, \*73501-73525**
- Upper Extremities **\*73000-73140(range x3)<sup>2</sup>, 77071, 77072**
- Lower Extremities **\*73551 -73660, 77071, 77072, 77073**
- Leg Length Discrepancy **\*72170-72190, \*73551 - 73660, 77072, 77073, 72200-72220**

#### Important Notes:

- All codes are applicable for new patients. **Bolded codes are required for 1<sup>st</sup> Post-Op Appointments.**
  - Patients coming from another facility need to hand carry any previous X-Rays and have Radiology codes authorized for time of service.
  - **Always range** new patients for visit **and** radiology codes.
2. All New Patients - Upper Extremity X-rays, request entire range x3 to meet current standard of practice.



For the following,	Clinic
Jaw Fractures	Surgery, ENT (Dr. Ardeshirpour, ENT Facial Plastic Surgery) Surgery, Oral Surgery Dentistry - Oral & Maxillofacial Surgery
Osteoporosis	Osteoporosis
Rheumatology	Rheumatology
Pigeon Chest/Pectus Excavatum/ Pectus Carinatum	Surgery, Pediatrics
Rib Fractures	Cardiothoracic Surgery
Skull Fracture	Neurosurgery





Some Medical Groups do not approve ranged codes so here are all codes in between the ranged codes that would need to be approved.

**Upper Extremities (73000-73140)x3, 77071, 77072**

**Adult & Peds:** 73000 x3, 73010 x3, 73020 x3, 73030 x3, 73050 x3, 73060 x3, 73070 x3, 73080 x3, 73090 x3, 73092 x3, 73100 x3, 73110 x3, 73120 x3, 73130 x3, 73140 x3, 77071, 77072

**Lower Extremities (73551-73660)**

73551, 73552, 73560, 73562, 73564, 73565, 73521, 73590, 73592, 73600, 73610, 73620, 73630, 73650, 73660, 77071, 77072, 77073

**Scapula & Clavicle (73000-73050)**

73000, 73010, 73020, 73030, 73040, 73050

**Spine- Back & Neck (72082-72120) (72200-72220) (72040-72052)**

72082, 72083, 72084, 72100, 72110, 72114, 72120, 72200, 72202, 72220, 72040, 72050, 72052, 72020, 72070, 72074, 72080

**Pelvic Girdle- Hip/Pelvis 72170, 72190 (72200-72220) (73501-73525)**

72170, 72190, 72200, 72202, 72220, 73501, 73502, 73503, 73521, 73522, 73523

**Leg Length Discrepancy (72170-72190) (73501-73660) 77072, 77073 (72200-72220)**

72170, 72190, 73501, 73502, 73503, 73521, 73522, 73523, 73551, 73552, 73525, 73560, 73562, 73564, 73565, 73590, 73592, 73600, 73610, 73620, 73630, 73650, 73660, 77072, 77073, 72200, 72202, 72220