



All superscript numbers (Example: Description<sup>1</sup>) correspond to important notes at the bottom of each page.

*This guide has three sections:*

**Page 1: Referrals for: Diagnosis Specific Visits and Non-Fracture/Dislocation Visits**

**Page 2: All Fracture/Dislocation Referrals**

### Referrals for: Diagnosis Specific Visits

Condition/Diagnosis:	Required Codes:
Congenital Talipes Equinovarus (Club Foot)	Visit Codes 99241-99245 or 99201-99205 29355x2, 27605x2, 29450x6, 29345x2, 29345x2, 29405x2, 29405x2 77071, 77072, 77073, 73551-73660
(Toe Walker)	Visit Codes 99241-99245 or 99201-99205 29450x6, 29345x2, 29345x2, 29405x2, 29405x2 77071, 77072, 77073, 73551-73660
Genu Valgum (Knocked Knee)	Visit Codes 99241-99245 or 99201-99205 77071, 77072, 77073, 73551-73660
Syndactyly- (Upper Extremity) Webbed Fingers	Visit Codes 99241-99245 or 99201-99205 77071, 77072, 73000-73140
Syndactyly- (Lower Extremity) Webbed Toes	Visit Codes 99241-99245 or 99201-99205 77071, 77072, 73551-73660
Metatarsus Adductus (Toes Pointed Inward)	Visit Codes 99241-99245 or 99201-99205 29355x2, 29450x6, 29345x2 77071, 77072, 77073, 73551-73660
Vertical Talus (Rocker Bottom Flat Foot)	Visit Codes 99241-99245 or 99201-99205 29355x2, 29450x6, 29345x2 77071, 77072, 77073, 73551-73660
Plantar Fasciitis/ Flat Foot/ Foot Deformity	Visit Codes 99241-99245 or 99201-99205 29355x2, 29450x6, 29345x2 77071, 77072, 77073, (73551-73660)x3

### Referrals for: Non-Fracture/Dislocation Visits

Select codes from each section:

**A** Visit Codes

**B** Required X-Ray/Radiology codes

#### Visit Code(s):

**New Patient/Initial Visit Code(s):**  
99241-99245 or 99201-99205

**Established Patient/Follow Up Code(s):**  
99211-99215

#### Required Radiology Codes

##### Bone/Body Region(s):

##### Radiology Code(s) \*ranges are all-inclusive:

Scapula & Clavicle	*73000-73050
Spine (Back & Neck)	*72010-72120, *72200-72220, *72040-72052
Pelvic Girdle (Hip/Pelvis)	72170, 72190, *72200-72220, *73501-73525
Upper Extremities	*73000-73140(range x3) <sup>1</sup> , 77071, 77072
Lower Extremities	*73551-73660, 77071, 77072, 77073
Leg Length Discrepancy	*72170-72190, *73501-73660, 77072, 77073, 72200-72220

#### Important Notes:

- Patients coming from another facility need to hand carry any previous X-Rays and have Radiology codes authorized for time of service.
  - **Always range** new patients for visit **and** radiology codes.
1. All New Patients - Upper Extremity X-rays, request entire range x3 to meet current standard of practice.



All superscript numbers (Example: Description<sup>1</sup>) correspond to important notes at the bottom of each page.

## Referrals for: Fracture/Dislocation Visits

Selected codes from each section:

- 1** Visit Codes
- 2** Procedure, Casting & Splinting Codes
- 3** Required X-Ray/Radiology codes

### Visit Codes

**New Patient/Initial Visit Code(s):**

99241-99245 or 99201-99205

**Established Patient/Follow Up Code(s):**

99211-99215

**Procedure (Casting & Splinting Codes encompassed) to be used only with fracture diagnoses**

Bone(s)	Procedures
Scapula	23570
Clavicle	23500
Phalanges	26720, 26725, <b>29086, 29130, 29085</b>
Metacarpals	<b>29075, 29125</b> , 26600, 26605
Carpals	25600, 25630, 25605, <b>29075, 29125, 29065, 29105</b>
Radius Radius/Ulna	25500, 25560, 25605, 25660, <b>29065, 29075, 29105, 29125</b>
Ulna	25530, 25535, 25600, <b>29065, 29075</b> , 29105, 29125
Humerus	24500, 24505, 24530, <b>29058, 29065, 29075, 29105</b>
Elbow	24530, 24670, <b>29065, 29105, 29075</b>
Metatarsals & Phalanges	29425, 28470, L3260, L3265, <b>29405</b>
Femur (Adult)	<b>29345, 29355, 29405</b>
Femur (Peds)	<b>27238, 27240, 29405</b>
Patella	27530, <b>29345, 29355, 29405</b>
Tibia	27750, <b>29345, 29355, 29405</b>
Fibula	27780, <b>29345, 29355, 29405</b> , 29425
Tarsals	29405, 29425, 27760, 29405
Ankle (post-op only)	<b>29425, 29355, 29345, 29405</b>

### Required Radiology Codes

**Bone/Body Region(s):**

**Radiology Code(s) \*ranges are all-inclusive:**

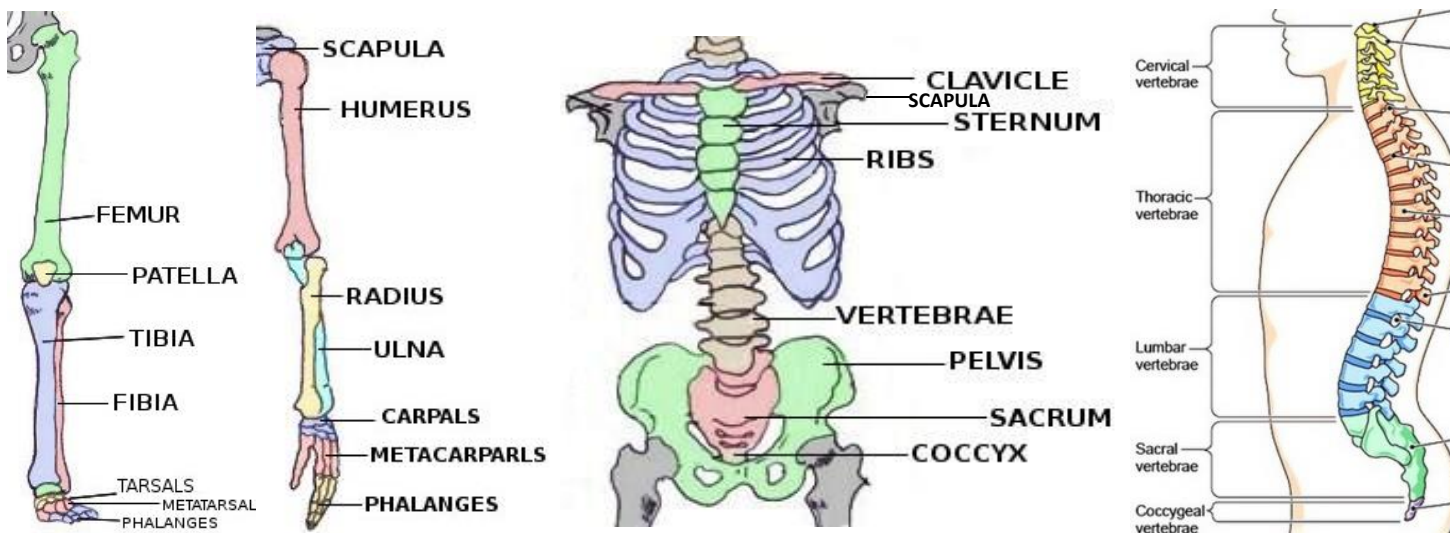
Scapula & Clavicle	<b>*73000-73050</b>
Spine (Back & Neck)	<b>*72010-72120, *72200-72220, *72040-72052</b>
Pelvic Girdle (Hip/Pelvis)	<b>72170, 72190, *72200-72220, *73501-73525</b>
Upper Extremities	<b>*73000-73140</b> (range x3) <sup>2</sup> , <b>77071, 77072</b>
Lower Extremities	<b>*73551-73660, 77071, 77072, 77073</b>
Leg Length Discrepancy	<b>*72170-72190, *73501-73660, 77072, 77073, 72200-72220</b>

### Important Notes:

- All codes are applicable for new patients. **Bolded codes are required for 1<sup>st</sup> Post-Op Appointments.**
  - Patients coming from another facility need to hand carry any previous X-Rays and have Radiology codes authorized for time of service.
  - **Always range** new patients for visit **and** radiology codes.
2. All New Patients- Upper Extremity X-rays, request entire range x3 to meet current standard of practice.



For the following,	Clinic
Jaw Fractures	Surgery, ENT (Dr. Ardeshirpour, ENT Facial Plastic Surgery) Surgery, Oral Surgery Dentistry - Oral & Maxillofacial Surgery
Osteoporosis	Osteoporosis
Rheumatology	Rheumatology
Pigeon Chest/Pectus Excavatum/ Pectus Carinatum	Surgery, Pediatrics
Rib Fractures	PCP





### *Additional Internal Reference Information:*

- No auth is required for Pre-op or Post Op appointments unless x-ray or casting codes are needed. X-rays and/or other radiology tests ordered for a post op visit are not covered under the global period and an authorization must be obtained for the additional tests (except for LLU Managed Care Plans, X-Rays are covered under the global period). If an x-ray or casting is needed, send CRM to clinic to have referral shell dropped (look into chart on last note to see if x-ray is required). Log CRM as: Other/Referral Coordinator
- For all HMO's for the first Post-Op visit, always send a CRM to clinic if there is no referral shell to verify that no additional codes are needed. Log CRM as: Other/Referral Coordinator
- If X-ray and/or radiology procedures are redirected in network by payor please notify clinic ASAP so they can inform the patient.
- If a referral has been assigned to or is in process by either Gabby Tellez or Tasa Cash please do not process the referral. The clinic will be responsible for obtaining the authorization. Please continue to complete all registration fields and mark the "Auth required" field in LLEAP as "clinic responsible."

#### **Payor Specific Notes:**

- See Initial Visit Code Guideline for direction as needed.

#### **No Authorization Required for X-rays.**

- Cal Optima direct (Only)
- IEHP Direct/Open Access
- Molina Direct
- PHN
- Riverside Family Health Medical Group
- CCS (has a CCS Authorization on the CCS website or LLEAP and it is linked to one of our Orthopedic Drs or SAR # linked to Scg07 Sgc01 or Sg02) and authorization has not expired.
- Tricare Prime/Standard and Tricare VA Choice Program
- Horizon Med Grp
- New Horizon Med Grp
- Managed Care

#### **Clinic Contact Info:**

<b>Gabby Tellez</b> , Referral Coordinator	x55540
<b>Davina Duchesne</b> , Supervisor	x55595



Some Medical Groups do not approve ranged codes so here are all codes in between the ranged codes that would need to be approved.

**Upper Extremities (73000-73140)x3, 77071, 77072**

**Adult & Peds:** 73000 x3, 73010 x3, 73020 x3, 73030 x3, 73040 x3, 73050 x3, 73060 x3, 73070 x3, 73080 x3, 73085 x3, 73090 x3, 73092 x3, 73100 x3, 73110 x3, 73115 x3, 73120 x3, 73130 x3, 73140 x3, 77071, 77072

**Lower Extremities (73551-73660)**

73551, 73552, 73560, 73562, 73564, 73565, 73580, 73590, 73592, 73600, 73610, 73615, 73620, 73630, 73650, 73660, 77071, 77072, 77073

**Scapula & Clavicle (73000-73050)**

73000, 73010, 73020, 73030, 73040, 73050

**Spine- Back & Neck (72082-72120) (72200-72220) (72040-72052)**

72082, 72083, 72084, 72100, 72110, 72114, 72120, 72200, 72202, 72220, 72040, 72050, 72052

**Pelvic Girdle- Hip/Pelvis 72170, 72190 (72200-72220) (73501-73525)**

72170, 72190, 72200, 72202, 72220, 73501, 73510, 73520, 73525

**Leg Length Discrepancy (72170-72190) (73500-73660) 77072, 77073 (72200-72220)**

72170, 72190, 73500, 73510, 73520, 73525, 73530, 73540, 73560, 73562, 73564, 73565, 73580, 73590, 73592, 73600, 73610, 73615, 73620, 73630, 73650, 73660, 77072, 77073, 72200, 72202, 72220